



INTEGRABLE DOT PEEN

XF510p

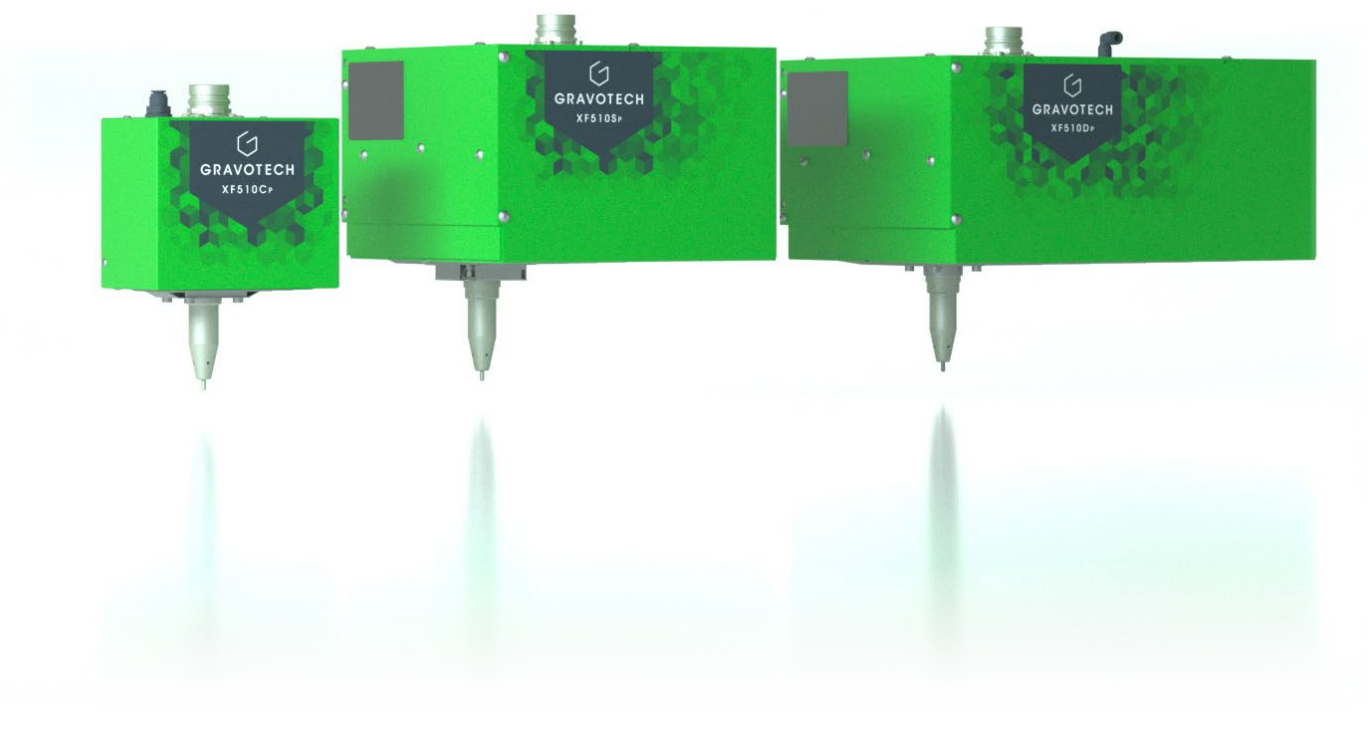


GRAVOTECH

by  **BRADY**



Since inventing dot peen technology 40 years ago we have continued to innovate and the XF510p takes the crown for being the smallest and fastest on the marking all while meeting our high standards of precision.



COMPACT SOLUTION

With 3 sizes available our compact size is the smallest on the market.

This makes the XF510p ideal for restricted spaces and whether on the line or on a robotic arm the integration is simple in any position reducing the time and cost of installation.

FAST

When short cycle times are a must the XF510p is for you, with a marking speed of 12 characters in one second possible it is setting new standards for speed.

TIRELESS

Able to work on uninterrupted production lines, the XF510p was designed to last.

Made with high-quality parts we have thousands of units installed worldwide providing maximum reliability and minimum maintenance costs.

SEE OUR VIDEO



KEY FEATURES



3D Stylus

The 3D Stylus makes marking of shaped parts easy, by adapting to the shape of each part.

The tip of the stylus extends or retracts automatically when in contact with the surface being marked, meaning, a single marking or linked marking on parts with unequal heights, inclined planes, or abnormal surfaces can be done with no adjustment to the Z-axis even marking domed surfaces and cylindrical parts with no rotation system required.



Fast dot peen marking machine

Be it 2DCodes, Dates, Counters variables, texts, serial numbers, shapes logos, batch numbers, whatever you are marking, up to 12 characters per second, the XF510p takes fast marking to the next level for all materials up to 62HRC.

With such a short cycle time the XF510p will not disappoint.



The industry's choice for direct part marking

With over 50,000 units sold around world and over 15 trillion marked characters the XF510p has become the industry's go to choice for high-volume, high-speed direct part marking.

Designed for continuous use with minimum servicing time the industry relies on the XF510p for fast and accurate marking and as a fantastic return on investment.

LEARN MORE ABOUT THE XF510p



CONTROLLER

XCOM



Simplified user experience

The XCOM controller looks like a tactile tablet (7 "/18 cm) and is just as easy to use. From its tactile screen, the operator can quickly set up, edit, program templates, and launch markings. No PC required.

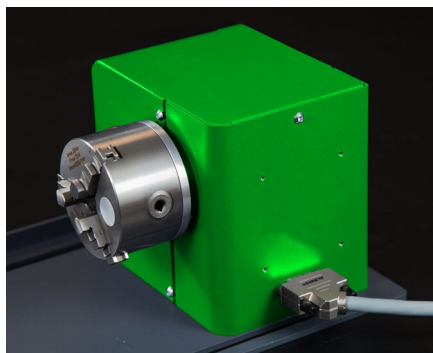
Hyperconnected XCOM

The ideal controller for industry 4.0. Just choose your preferred field bus (Profinet, Ethernet IP or EtherCAT) to integrate the XCOM to your process and enjoy a reduced commissioning time and full interoperability on your production line, whichever the PLC and devices used.

Empower your data

The data collection and storage feature in the XCOM simplifies the traceability of your products: generate history files, creates dashboards to monitor machines, track your productivity, and set up preventive maintenance. This controller is a powerful tool that will save time, money, and headaches!

ACCESSORIES



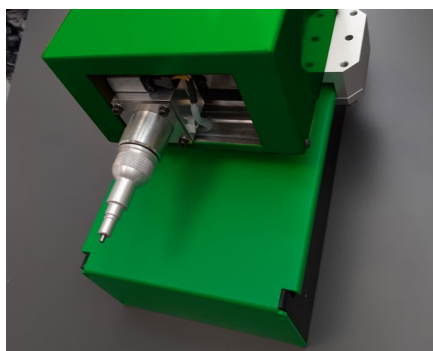
Rotary device



Head adjustment device



Adaptive connections



Automatic Z-Axis



Switchbox: multi-head control



Protective covers

APPLICATIONS



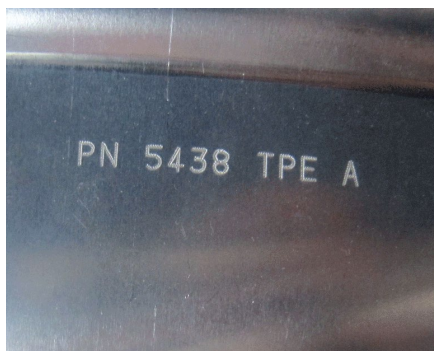
Part marking



Automotive marking



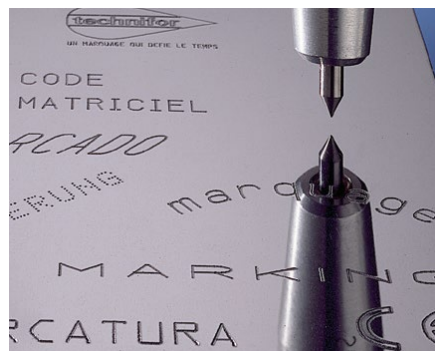
Marking tools for identification and equipment traceability



Aluminum marking



Steel marking



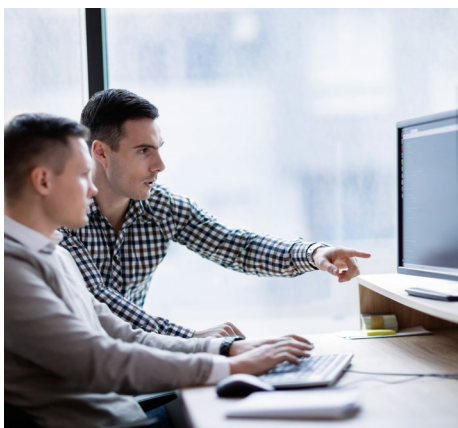
Stainless steel marking

SERVICE & SUPPORT



Training

Our training modules are designed to optimize your use of our solutions and are available for our full range of machines, software and accessories.



Technical support

We bring you local support in your language in more than 50 countries, where we have established presence directly and with our distribution partners.



Maintenance

Thanks to experience gathered with Gravograph and Technifor and our global presence in more than 50 countries with 150 Gravotech technicians and our distributor partners, we can offer you a wide range of services.

MAKE YOUR SAMPLES



TECHNICAL DATA

XF510p

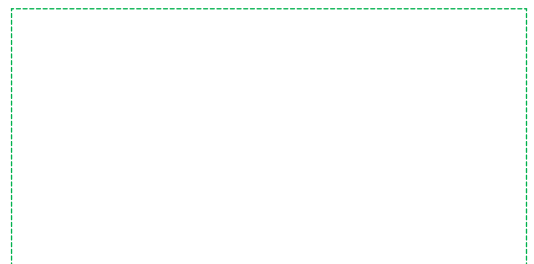
Model	Cp	Sp	Dp
Technology	Pneumatic		
Machine dimensions (L x W x H)	136.4 x 86.7 x 137 mm (5.37 x 3.41 x 5.39 in)	219 x 237 x 170 mm (8.62 x 9.33 x 6.69 in)	319 x 237 x 170 mm (12.56 x 9.33 x 6.69 in)
Machine weight	2.35 kg (5.18 lbs)	7.8 kg (17.2 lbs)	9.7 kg (21.38 lbs)
Marking area (L x W)	50 x 20 mm (1.97 x 0.79 in)	100 x 80 mm (3.94 x 3.15 in)	200 x 80 mm (7.87 x 3.15 in)
2D codes	Datamatrix, QR Codes		
Communication Interfaces	RJ45, USB (x2), RS232, 8I/4O, Process IO		
Compressed air supply	6 bar		
Display	7" color touchscreen		
Embedded fonts	10		
Fieldbus (option)	Profinet, Ethernet IP		
Input voltage	100 - 240 V AC		
Languages available	19		
Operating temperature	5° to 45° (41 to 113 F)		
Rated power consumption	140 VA		
Safety performance level (option)	PL d		



web.us@gravotech.com
+1 800 843 7637
www.gravotech.us

GRAVOTECH, INC. (USA HEADQUARTERS)
2200 Northmont Parkway,
Duluth, GA 30096, USA

Distributed by:



Follow us:



gravotech.off



Gravotech Group



Gravotech



Gravotech - Gravograph

Gravotech-XF510p-04-2025-en-US. The information, photos and illustrations contained in this document are not binding and can be modified without notice.

This document is non contractual. Gravograph™, Gravotech™, Technifor™, WeLase™, Gravostyle™ and Dedicace™ are used, pending or registered trademarks of a Gravotech Group company.

©Gravotech Marking - 466 rue des Mercières - Z.I. Périca - 69140 Rillieux-la-Pape - France. Société par Actions Simplifiée with a share capital of 26 749 016€ - SIREN : 334 818 515 RCS Lyon.